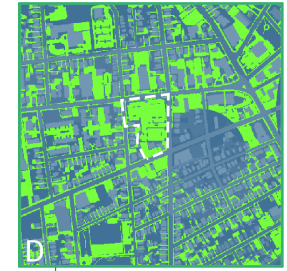
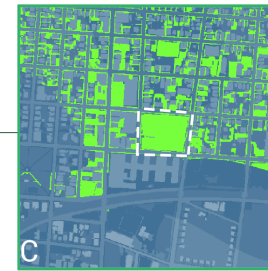
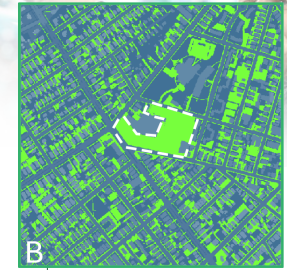
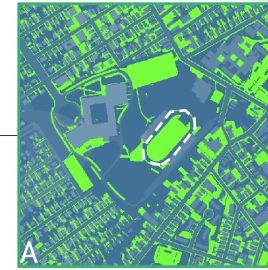
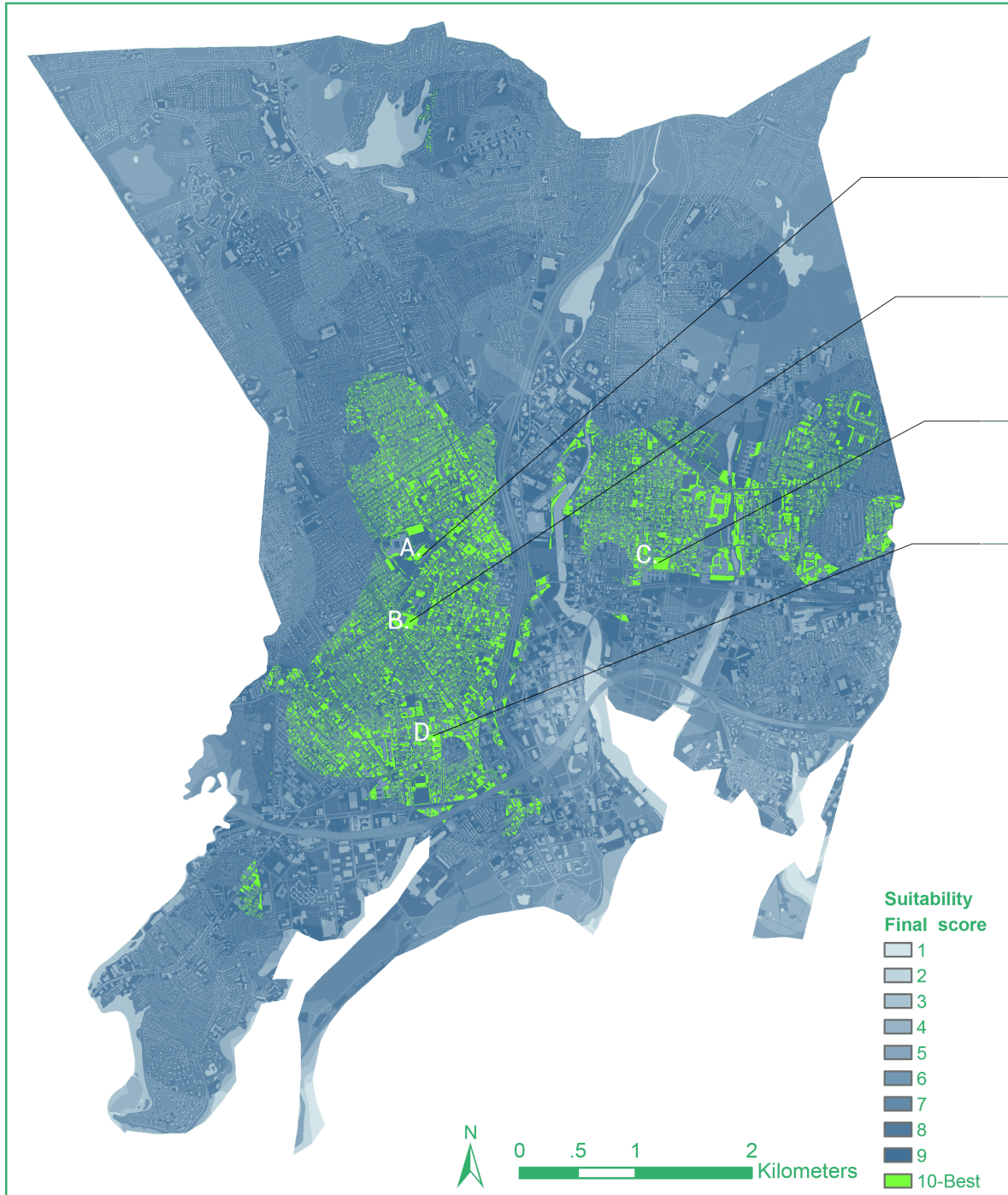


SITING A PRE-GAME PROMOTIONAL EVENT

Modeling Geographic Space

Suitability Score Map for Holding Pre-Game Event

Kefan Long Assignment-3



This map takes into consideration **wetness, openness, road connectivity, resident closeness and resident diversity**. These five basic factors are categorized into two types of suitabilities-**physical suitability** and **suitability of participation**. The two suitabilities form the overall suitability for holding the event.

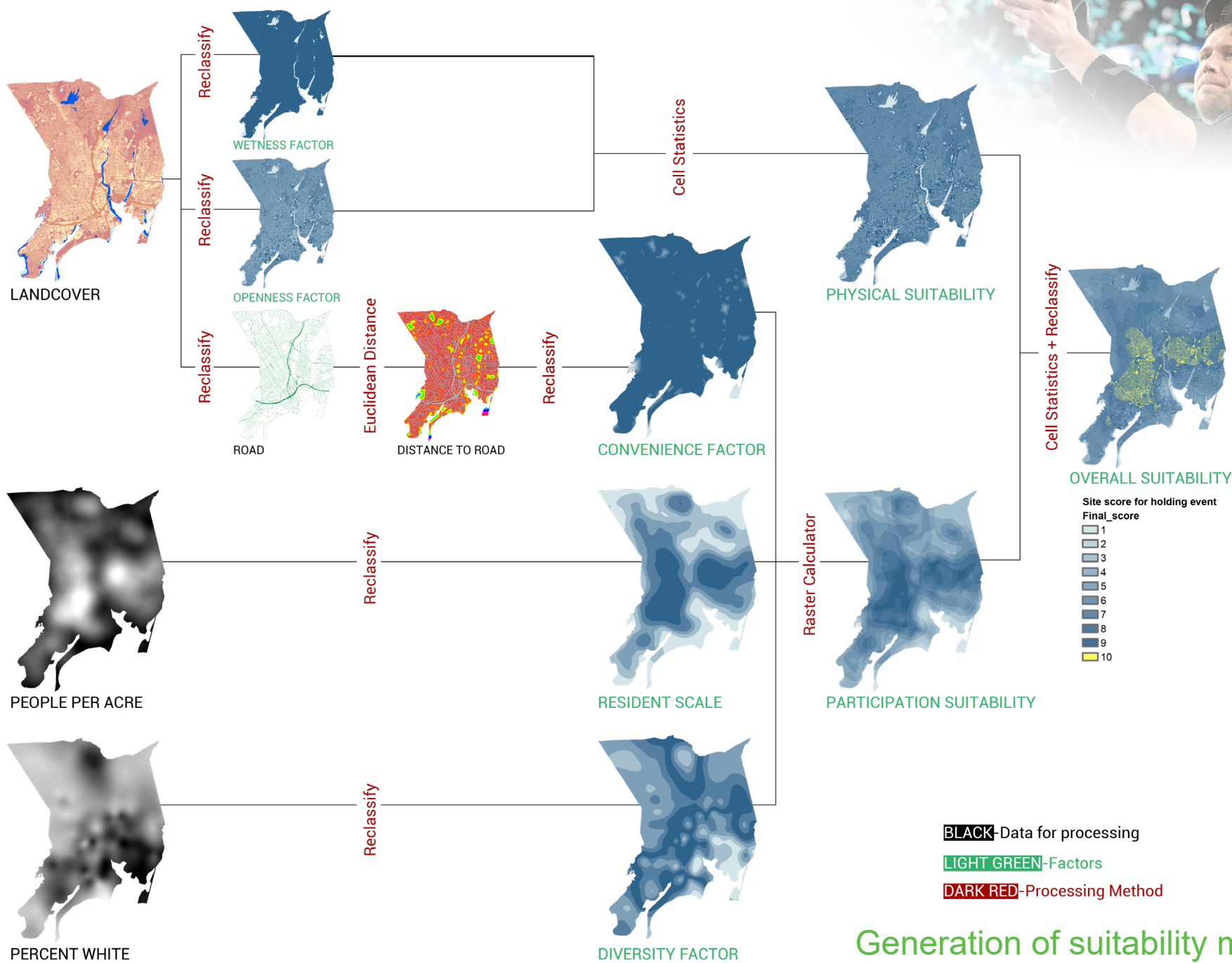
In the final map, I picked four options for holding the pre-game event. The priority is **A,B>C,D**. The shape of A seems to be an open stadium, which is the perfect site for sporting event. B has convenient road transportation. If we consider the cost of using the site, B seems to be a better choice.



SITING A PRE-GAME PROMOTIONAL EVENT

Modeling Geographic Space

Kefan Long Assignment-3



BLACK-Data for processing

LIGHT GREEN-Factors

DARK RED-Processing Method

Generation of suitability map